

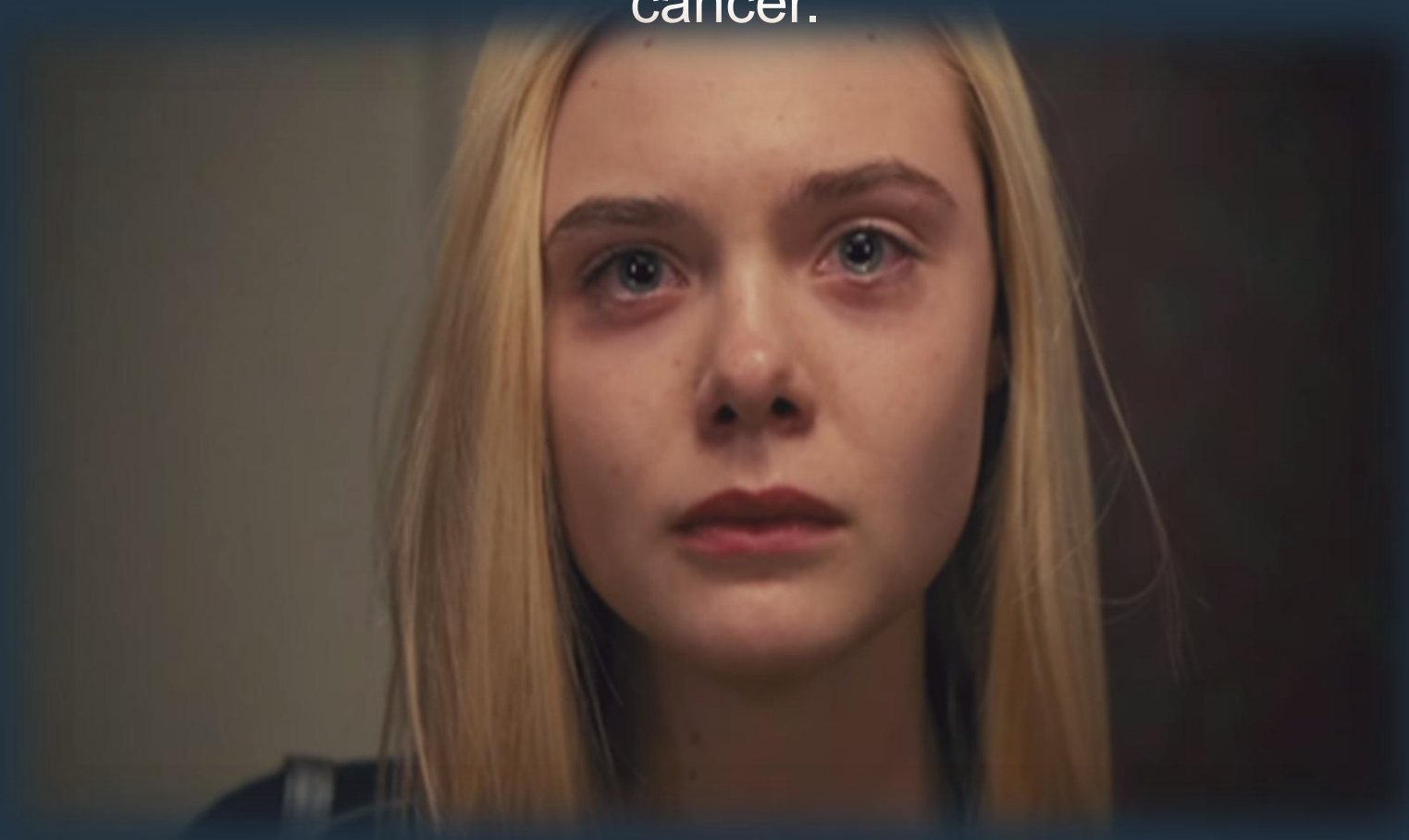
Once upon a time, in a small town



There was a beautiful girl named Sarah.



Sarah had recently been diagnosed with an aggressive form of cancer.





She had countless questions about her diagnosis, treatment options, and what to expect during her cancer journey.



She struggled to schedule appointments with different specialists,  
coordinate tests and procedures.  
lack of guidance left her feeling frustrated and exhausted.



As Sarah began her treatment, she experienced debilitating side effects and physical discomfort without emotional, practical support and education, Sarah felt isolated and alone in her battle against cancer.



Despite the best efforts and the unwavering support of Sarah's medical team,  
Sarah felt isolated and alone in her battle against cancer.







# Dr. Harold Freeman

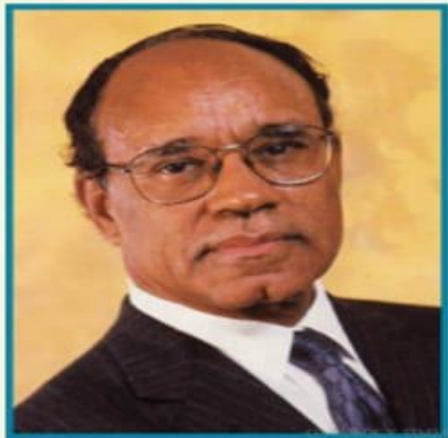
## 1990 First Patient Navigation Model

### Mission

To save lives from cancer by eliminating barriers to timely diagnosis and resolution.

### Aim

Diminish high breast cancer death in poor black women





By :

**Dr: Aliaa Ezz Eldin**

**Lecturer of Nursing Administration**

**Helwan University**

# Advancements in Multidisciplinary Approaches for Breast Cancer Patients: **Integrating Nurse Navigation**



# Agenda



- Introduction
- Nurse Navigator as a concept
- Core Competencies of Nurse Navigators
- Role of Nurse Navigator
- Nurse Navigator Program
- Implementation of Nurse Navigator Programs





# Introduction

Nurse Navigator programs play a crucial role in empowering patients to actively participate in their healthcare journey to be engaged in their healthcare decisions and self-management of their conditions. And also contribute to improve patient outcomes, satisfaction, and overall well-being.



# Nurse Navigator

Nurse navigators are healthcare professionals who assist the patient from initial diagnosis through the entire treatment process.

Nurse navigators are multi-tasking

Who are advocates, teaches, therapists, and friends, as well as nurses.



# Nurse Navigator

Nurse Navigators support patients with the emotional, mental, physical, and clinical aspects of a cancer diagnosis. They assess the patient's financial, clinical, and psychological needs and work with a multidisciplinary team to create personalized care plans.





# Core Competencies of Nurse Navigators

## Patient Assessment and Care Coordination

- ❖ Conducting Comprehensive Patient Assessments
- ❖ Developing Individualized nursing Care Plans
- ❖ Coordinating Multidisciplinary Care Team Collaboration



# Core Competencies of Nurse Navigators

## Health Education and Patient Empowerment

- ❖ Providing Disease-specific Education and Self-management Support
- ❖ Promoting Health Literacy and Health Behavior Change
- ❖ Enhancing Patient Engagement and Self-Advocacy



# Core Competencies of Nurse Navigators

## Resources Identification and Referral

- ❖ Identifying Relevant Healthcare Resources and Services
- ❖ Making Appropriate Referrals and Facilitating Access to Resources
- ❖ Navigating Insurance and Financial Assistance Programs

## SOCIAL SERVICES RESOURCES





# Core Competencies of Nurse Navigators

## Psychosocial Support and Emotional Well-being

- ❖ Assessing and Addressing Emotional and Psychosocial Needs
- ❖ Providing Emotional Support and Counseling
- ❖ Facilitating Support Groups and Community Resources



# Role of Nurse Navigator

- Understand patients' diagnosis by translating medical terms.
- Decrease anxiety and find answers to patients' questions.
- Explore the pros and cons of personalized treatment options.
- Prepare for surgical and non-surgical treatments such as chemotherapy



# Role of Nurse Navigator

- Monitor the patient's response to treatments.
- Educate patients about treatments and side effects.
- Maintain patient confidentiality.
- Understand how to manage at home during recovery from surgery or treatments.



# Role of Nurse Navigator

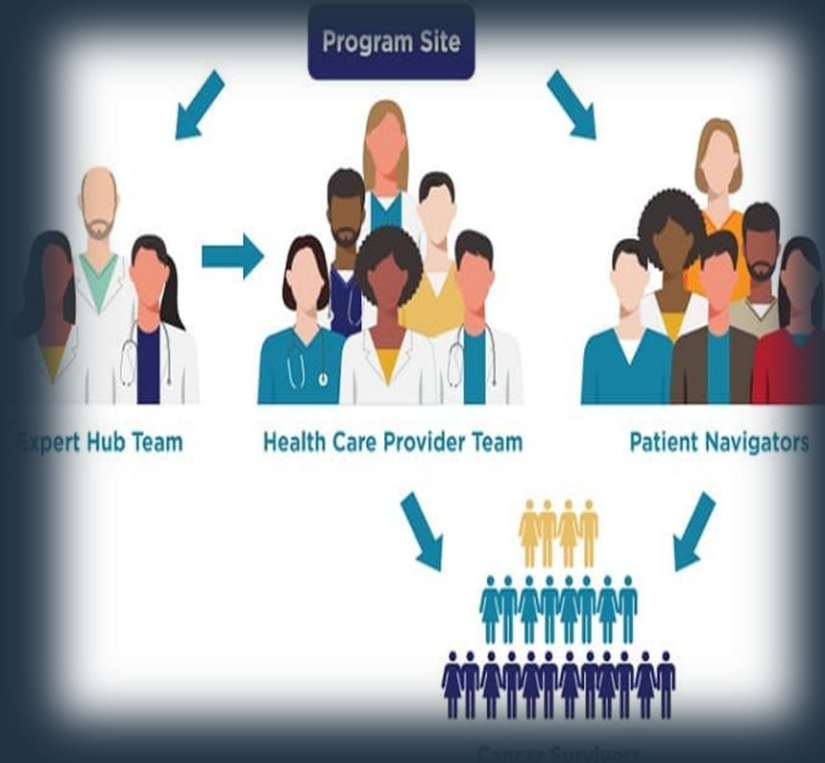
- Schedule appointments for tests, treatments, and procedures
- Manage financial issues related to care.
- Consider nutritional support during treatment.
- Access support groups, integrative complementary therapies and other community resources.
- Recover after treatment ends and stay on track with follow-up





# Nurse Navigator Program

Nurse Navigator program is a specialized healthcare service designed to guide and support patients through their healthcare journeys, particularly those facing complex medical conditions or procedures.



# Implementation of Nurse Navigator Programs

1. Program Planning and Stakeholder Engagement
2. Staffing and Training Considerations
3. Integration into Healthcare Systems and Settings



# Evaluation of Nurse Navigator Programs

1. Performance Metrics and Outcome Measures

2. Data Collection and Analysis

3. Continuous Improvement and Program Evaluation



## How nurse navigator programs can empower patients:

- A. Education and Information
- B. Shared Decision-Making
- C. Health Literacy and Self-Management
- D. Emotional Support and Advocacy
- E. Access to Resources and Services





أتمنى أن يأتي اليوم  
الذي يصبح فيه "السرطان"  
مجرد اسم برج من الأبراج الفلكية..